

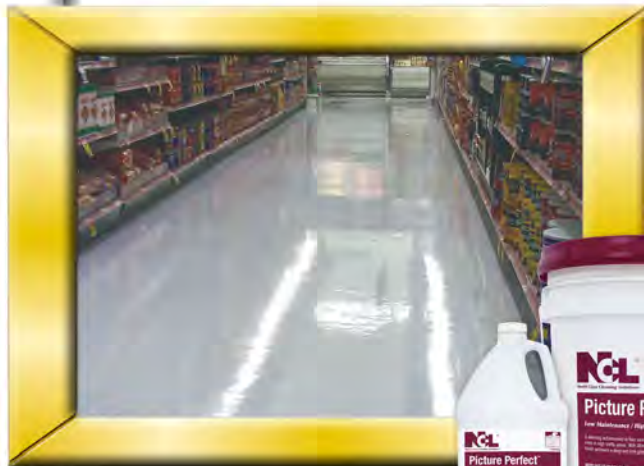
Modern Art...



PERFECTED!

PICTURE PERFECT

Low Maintenance / High Traffic Floor Finish



You need not travel to Paris to see the finest example of modern art. . .



PICTURE PERFECT is a dazzling achievement in floor care technology. This premier high solids floor finish offers the highest initial application gloss and exceptional

wear, especially in high traffic areas such as supermarkets, retail stores and large office building lobbies. With Ultra High Speed Burnishing, **PICTURE PERFECT** produces a deep wet look gloss, and requires a minimum of restorative maintenance to save time, labor, and money!

PICTURE PERFECT PRODUCT BENEFITS:

- Highest immediate "wet-look" gloss
- Superior gloss retention
- Endura™ advanced polymer system offers the ultimate in high-traffic wear
- Outstanding leveling
- Unparalleled soil repellency
- Combination Sealer / Finish

Exclusively designed for use with Ultra High Speed Battery, Electric or Propane Equipment



Picture Perfect™
Floor Coating and Finishing Material
As To Slip Resistance Only
18 EL

F
O
O
R
C
A
R
E

Artistic brilliance in floor care technology!



PICTURE PERFECT
offers the ultimate in both
initial laydown & long-term
gloss retention

SPECIFICATIONS

Type Integrated Fusion Polymer
Color White, Opaque liquid
Odor Typical acrylic
Non-Volatile Solids 22.0 ± .5%
pH 8.4-8.8
Drying Time 30 minutes
Coverage 2,500 sq. ft. / gal.

Specific Gravity 1.032
Density (lbs. / gal.) 8.597
Slip Resistant Yes
Freeze Thaw Stable Yes (3 cycles)
Detergent Resistant Yes
Leveling Excellent
Black Mark Resistant Excellent

Scuff Resistant Excellent
Resistant to Soiling Excellent
Gloss Retention Excellent
Immediate Wet Look Gloss Outstanding
Stability 1 Year Minimum in
Original Unopened
Container

DIRECTIONS

Application: Using a clean mop or applicator apply a thin uniform coat of sealer/finish. Allow to dry for a minimum of 30 minutes after each coat. Do not apply more than 4 coats in a 24 hour period. Floor should be thoroughly dry before traffic is allowed in area.

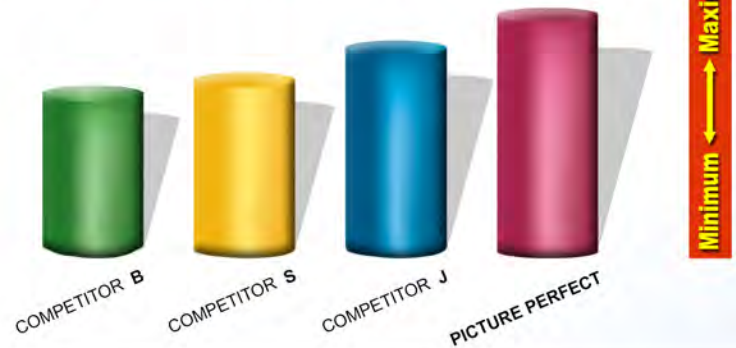
High Speed Burnishing: This is an ideal product for use with high speed polishing or burnishing machines of 1000 rpm or higher. Prior to high speed buffing or burnishing the floor surface should be dust or dry mopped. After the floor finish has set for two days damp mopping prior to buffing is also acceptable. When buffing or dry burnishing use a peach or tan buffing pad. Approved mop on restorers or laminators can be used when surface is worn.

Maintenance: Maintain in the conventional manner by cleaning with a treated yarn dust mop to remove surface dirt daily. Damp mop or clean with an automatic scrubber as required, using an approved neutral cleaner at the specified dilution.

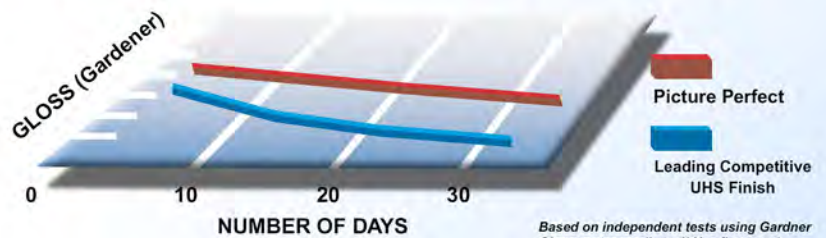
Distributed By:



INITIAL APPLICATION GLOSS



LONG TERM GLOSS RETENTION



COORDINATED FLOOR CARE PRODUCTS

BARE BONES No-Rinse/No-Scrub Liquifying Stripper

A 55%+ active stripper that cuts through the most extreme build-up of floor finish easily. Caustic free formula requires no rinsing, saving time and labor; works with lightning speed. Provides stripping performance by which all other products are measured.

IMAGE Deodorizing Neutral Cleaner

Outstanding Puri™ fragrance deodorizes as it cleans. Low pH formula requires no rinsing, yet leaves floor surfaces beautifully clean. Ideal for all floor maintenance programs. UL Classified for Slip Resistance.

SPIT SHINE UHS Kleen & Burnish

Specifically designed for use with High Speed / UHS equipment. This thermal reactive solution can be used by mop on restoration, applied by an auto scrubber or used as a spray buff. Leaves floors with a dramatic deep wet look gloss. UL Classified for Slip Resistance.

AQUA MAGIC Ultra High Speed Burnishing Pads

Available in all popular sizes.

NCL® **World Class Cleaning Solutions**®

401 North 10th Street • Philadelphia, PA 19123
(800) NAT-CHEM • (215) 922-1200 • FAX (215) 922-5517
www.nclonline.com